

John
Strabridge
(ed. Alison Welch/MW)

Dum transisset sabbatum

TrMCtTB



Arts & Humanities
Research Council

Tudor
Partbooks

Source:

GB-Och Mus. 979-983, No. 11
'Baldwin Partbooks', c.1575-81

Transcribed by Alison Welch

March 2015

revised MW August 2015

Original note values retained. Clef combination: G2 C1 C3 [C4] F4.

Underlay: source repetitions (via ditto sign) in italics; ambiguous syllabification underlined.

Attributions:

979: Jo. Strabridge (after 'mr w. birde' cancelled);

980: Strabridge

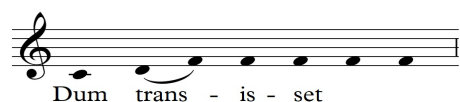
981: nil ('mr wi. birde' cancelled);

983: Strabridge

NB: Nos. 8-20 inclusive are otherwise all by Byrd

Dum transisset sabbatum

John Strabridge
(fl. c. 1550)



Triplex (979) Sa - ba - - - - - tum, sa -

Medius (980) Sa -

Contratenor (981) Sa - ba - - - tum,

[Tenor] Sa - ba - - - tum,

possibilities 5s vs II

Bassus (983) Sa - ba -

The missing Tenor is evidently imitative like Tr, Ct and B - but with points somewhat flexed in order to fit against the equal-note cantus in Medius. Like Byrd and Tallis, but unlike Sheppard, Strabridge defers the entry of the CF until two of the imitative voices have entered. The first three notes of the CF provide the diadic counterpart to the first imitative point.

Only periodic attempts are made to reconstruct the Tenor; below this, in stave 5, I have sketched some 'missing' notes which might provide raw materials for the reconstructed Tenor (but don't be bound by my choices of missing note). Text boxes are notes-to-self made to myself and can be ignored.

Does anyone know who John Strabridge was?

MW 2015-10-05

5

ba - - - - tum, sa - ba - - - -

sa - ba - - - - tum, sa - ba - - - -

sa - ba - - - - tum ma -

avoid III

cf. b.7, I

keep 4? 3rd needed

- - - - - tum, sab -

9

- - - - tum ma - ri - a mag - da - le -

tum ma - ri - - - -

tum ma - ri - a mag - da - le - nae, mag - da -

ri - a mag - da - le - - - - nae,

ungainly against CF

ba - - - - tum, sa - ba - - - - tum, sa -

13

- nae, ma - ri - a mag - da - le - nae, ma -

- a mag - da -

le - nae, ma - ri - a mag - da - le - nae,

ma - ri - a mag - da - le - nae,

ba - tum, ma - ri - a mag - da - le - nae,

Cadence GF with III?
Yes: close on F then clear way for new series, albeit defective.

17

ri a mag - da - le - nae, ma - ri - a mag - da - le - nae

- le - nae

ma - ri - a mag - da - le - nae, ma - ri - a mag -

ma - ri - a mag - da - le - nae, ma -

et ma - ri - - a, et ma - ri - a ja -

et ma - ri - a

- da - le - nae et ma - ri - a, et ma - ri -

ri - a mag - da - le - nae et ma - ri - a ja -

Voice I/III point tried here:
too laboured

See b. 15, III?

- co - bi, et ma - ri - a ja - - co -

ja - - co - bi

- a ja - co - - bi, ja - co -

co - - bi, et ma - ri - a ja - co -

29

-bi et sa - lo - me, .ij.

et sa - lo - me

dog leg

bi et sa - lo -

et sa

bi et sa - lo - mae et sa -

33

e - me - runt a - ro - ma-ta,

e - - - - - runt

me, et sa - lo - - - - me 6
4 e -

- lo - - - - - me e - me - runt, e -

45

why quit?

tes un - ge-rent Je - sum, ut
 ve - ni - en - - - - - tes un -
 en-tes un - ge - rent Je - - - - - sum,
 ve - ni - en - tes, ut ve - ni - en - tes un - ge - rent Je - sum

49

ve - ni - en - tes un - ge - rent Je - - - - - sum,
 ge - - - - - rent
 ut ve - ni - en - tes un - ge-rent Je - sum,
 ut ve - ni - en - tes un - ge - rent

53

un - ge - - - rent Je - - - sum.

je - - - - - sum. Al -

un - ge - - rent Je - - - - sum. Je - - -

Je - - - sum, un - ge - - rent Je - - - sum. Al -

57

al - le - luy - a, al - le - luy - - - a,

- le - lu - - - ya al -

sum. Al - le - luy - - - a, al -

al -

le - luy - - - a, al - le - luy - - - a,

69

- - - a, al - le - luy -
 - - - - - - - - - - -
 al - le - luy - - - -
 luy - - - - a, al - le - luy -

71

a, al - le - luy - - - a.
 - - - - - - - - - - - a.
 - a, al - le - luy - - - a.
 a, al - le - luy - - - a